



**Precise Global  
Tooling Group**



## **Cast Metal Mold Tooling**

A Precise Advanced Manufacturing Group Company



# Precise Global Tooling Group

Precise Global is a specialist manufacturer and program manager of cast metal mold tools. We actively promote our automotive tooling capability globally, forging strong links with Automotive OEM and parts manufacturing partners. By using Precise Global as your cast metal tooling partner, you are able to access a broad base of specialised precision toolmaking capacity that is coordinated through a single point of contact and able to deliver a turnkey package anywhere in the world through a dedicated program team. Precise Global management constantly pursue innovation and increased competitiveness in the industry by international benchmarking, leveraging opportunities for technology sharing and leading collaborative R&D programs. This multi-faceted customer, supplier and industry collaboration is fostered by our team to provide strong cohesion, continuous innovation and development of tooling related IP that is essential to fulfil large Automotive Programs in a seamless and highly effective manner.

An enquiry sent to Precise Global is the first step in creating a supply partnership with a professional company working closely with you to address every aspect of your requirements. The Precise Global Program Team will provide you with a highly efficient source of world class tooling capabilities structured to meet your program needs.



Gearbox Housing cast with tooling manufactured by Precise

Design and Engineering Partnership

Cost Effective Tool Production

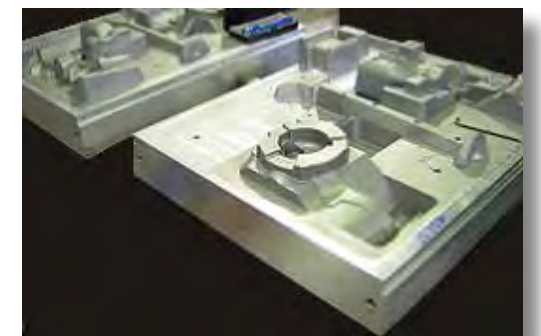
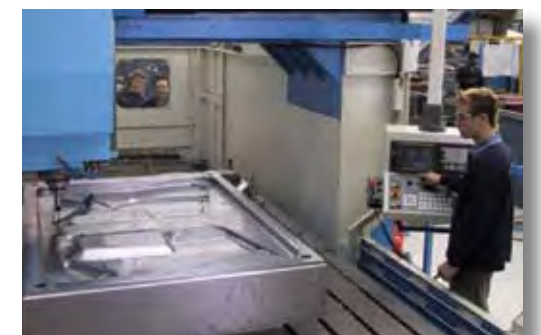
Competitive Lead Times

Large Program capacity through a Single Source

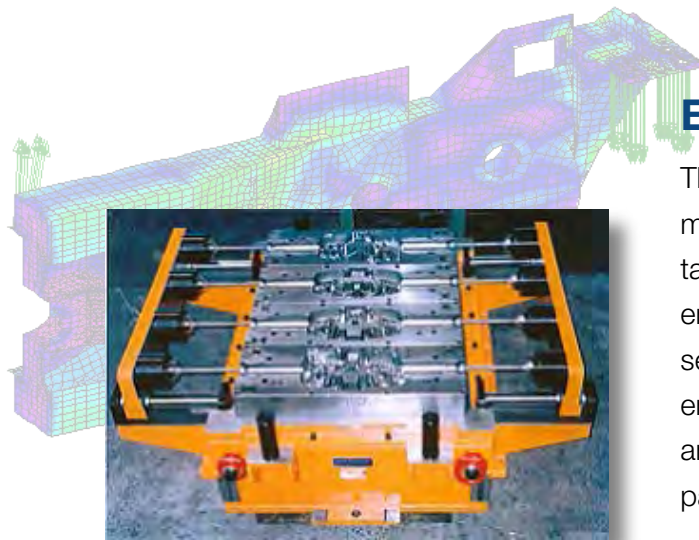
## Automotive Castings Expertise

Through its long history of supporting the vibrant and innovative Australian Automotive industry and now as a respected global tooling source, Precise Global has extensive experience and high level capabilities for all types of cast metal molded components. With an outstanding reputation for world class quality tooling even for the most complex parts, an ability to meet challenging project lead times and a highly competitive cost structure, we pride ourselves on our contribution to the customers' achievement of leading international benchmark indicators of lowest vehicle development, tooling and production costs.

Excellence in Cast Mold Quality







## End to end turnkey capability

The engineering capability of world class tooling design and manufacture contribute directly to the realisation of cost targets and meeting timing constraints...however they don't end there. We deliver outstanding value by extending our services through component, systems and process engineering, undertaking complete program management and systems responsibility from component data to final part verification at your facility.

## Highly cost effective world-class quality

Precise Global's combination of "world class quality tooling", low operating costs and LCC input as required provides a unique and highly attractive value proposition for the global automotive supply chain, lowering production costs with a guarantee of outstanding quality and performance.

## Support right at your door

With our own international resources and an excellent network of partners in Europe, the USA, China, India and South Africa, we can provide true local support both at the design stage and at tool delivery. From design development to fine tuning, tool modifications and maintenance we are able to meet all your needs for close project liaison and ongoing production support.

## Modern, highly efficient manufacturing

Precise Global has for many years integrated leading edge technology manufacturing equipment and support systems into their operations to attain maximum efficiency levels. High speed 5-axis cutting of mold cavities, cutter path generation and verification "at the machine" and precision die finishing without polishing are typical advances utilised to optimise processes, drive operational excellence and reduce tool production costs.

## Outstanding design and innovation

Precise Global designers combine use of the latest technology in CAD, and simulation tools with a highly innovative design culture to constantly challenge conventional design paradigms in order to provide efficient production alternatives. A high level of process knowledge is applied to assist part designers in achieving ease of manufacture and assembly for complex parts and to deliver all required product performance results.

## Strategic global integration

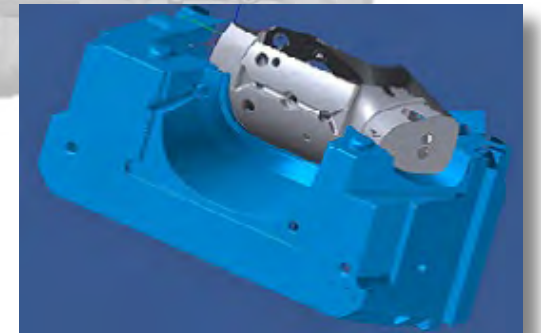
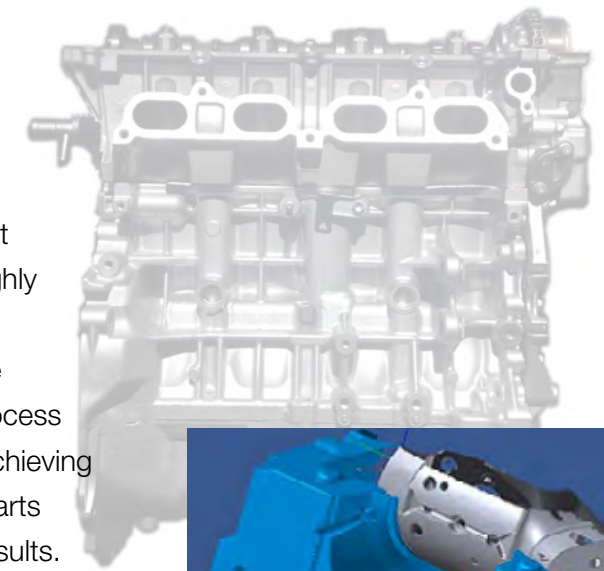
To ensure maximum competitiveness, Precise Global has integrated with the global tooling community, developing strategic linkages with a range of international partners. These partnerships drive tool and project cost minimisation for large programs, where varying international sourcing options are required to meet challenging budget constraints.

## Highly professional project management

Via extensive international experience, Precise Global has the skills and techniques necessary to efficiently manage information and data transfer, along with the high level of communication required for the continuous exchange of ideas required in today's simultaneous engineering environment. This ensures we design fully to your specifications, support changing demands from your customer and guarantee to conform to your final technical and commercial requirements.

## Web based project reporting

On line web tools for technical reviews, project management and visual status reporting offer easy communication to anywhere in the world, allowing customers to monitor project progress in real time.



# World-class Automotive Castings Capabilities



## Precise Global —providing excellent value for high quality components

From the smallest high precision and highly visual parts to the largest or most complex components, Precise Global is supporting major automotive programs with outstanding results. Whether your needs are for parts manufactured by High Pressure Die Casting, Low Pressure Casting, Gravity Casting, Investment Casting, Sand Casting or Green Sand Pattern Casting, Precise Global has demonstrated capability in these forms of tooling to meet exacting automotive OEM specifications.

**Engine Block**

**Cylinder Head**

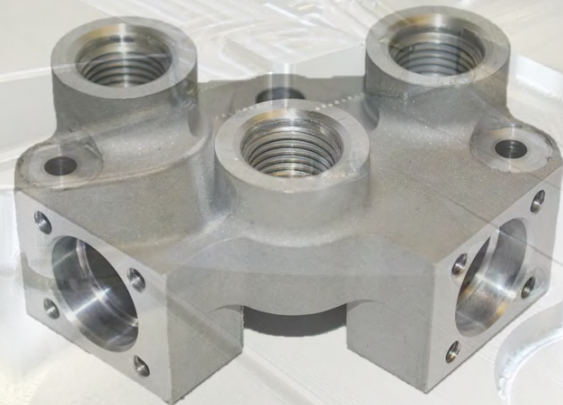
**Cam Covers**

**Manifolds**

**Auto Transmission**

**Gearbox Housings**

**Valve Covers**



**Engine and Transmission Components**



## Precise Global Tooling — manufactured to meet the demands of high cycle rate 24/7 production

Starting from an uncompromising design and simulation, through using fully certified, hardened and specialty steels and the highest quality runner system and standard tooling components, every aspect of the tool is optimised to meet your production volume requirements without premature failure and with efficient maintenance needs.

**Suspension Arms**

**Brackets**

**Door Handles**

**Impellers**

**Front and Rear Knuckles**

**Control Arms**

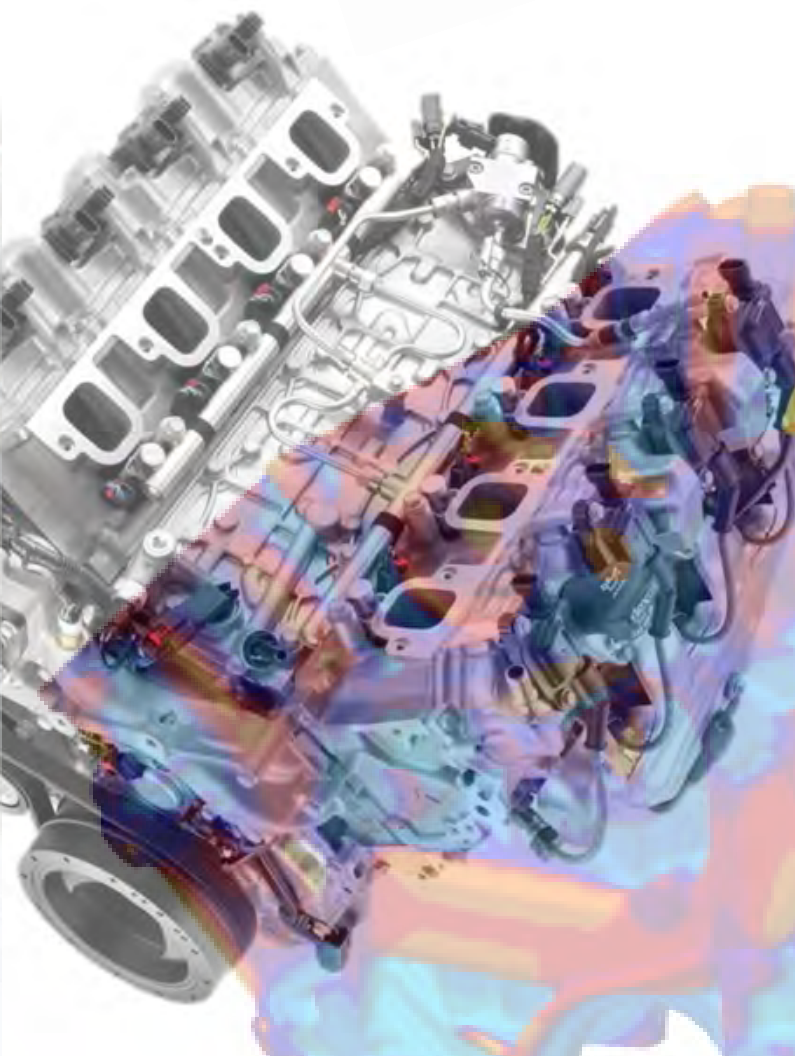
**Motor Housings**

**Heat Sinks**

**Cross Member**

**Brake Components**

**Aluminum Wheels**



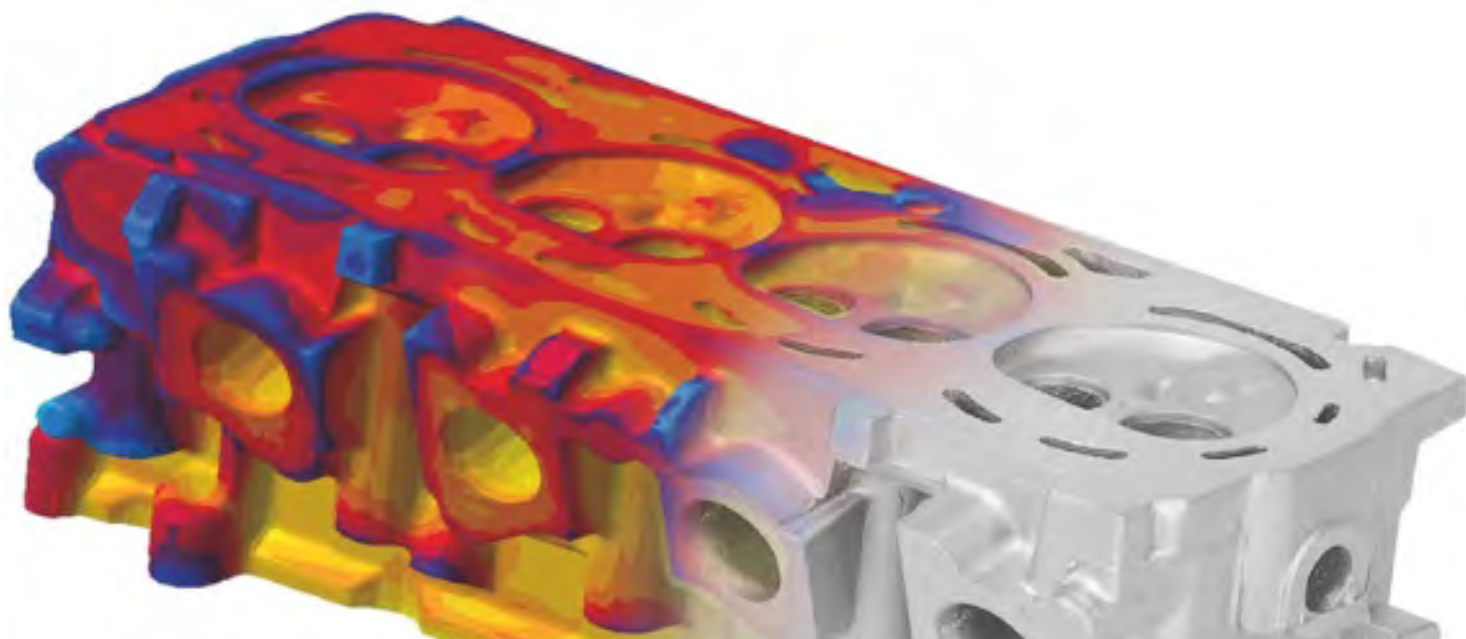
**Suspension and Misc. Components**





# Precise Global Tooling Group

Established in 1971, Precise Global Tooling Group, a division of the Precise Advanced Manufacturing Group ( PAMG ), has been a key supplier of Cast Metal Molds to assist the Australian Automotive OEM's and 1st Tier suppliers. Since 1994 Precise Global has demonstrated to be a highly capable and competitive supplier to global industries such as automotive, aerospace and defence, electronics and whitegoods. Precise Global focuses over 40 years of specialist automotive tooling experience to deliver world class, innovative plastic mold capabilities in a cost effective and large scale capacity through a single source.



## Precise Global

Head Office : 28 Dalgleish St,  
Thebarton, South Australia 5031  
Phone + 61 (0) 8 8241 0888  
Fax + 61 (0) 8 8241 0850  
Email: [sales@precise-amg.com.au](mailto:sales@precise-amg.com.au)

[www.precise-amg.com.au](http://www.precise-amg.com.au)